

Environment Management Series



WASTE MANAGEMENT

TOOLBOX PRESENTATION – WHYALLA SHARED FACILITY

Environment Management Series: EMS006 – Key Information: Waste Management (V3)
(Whyalla Shared Facility – includes PP & Port Facilities)



IMPORTANCE OF GOOD WASTE MANAGEMENT



Why is correct waste management important?

- The regulatory conditions which Liberty Primary Steel / SIMEC Mining operate within state very specifically how waste produced onsite must be managed.
- Non-compliant waste disposal impacts not only on Liberty Primary Steel / SIMEC Mining but also our environment.
- Non-compliant waste disposal can cause contamination, environmental damage and expensive clean-up costs.



OUR LANDFILL

Why is correct waste management important (cont)?

- There are very tight legal constraints from the EPA relating to what can go in our landfill
- The Whyalla Steelworks general landfill is clay lined. This means there is no artificial liner between what could leach out of the rubbish and into the ground-water and therefore only certain wastes are permitted.
- Waste can be a significant source of contaminants that pollute the environment, especially the ground water.
- If Liberty Primary Steel / SIMEC Mining were to lose the approval to dispose of waste onsite, off-site disposal costs would be much higher.



GFG Whyalla is one of only three companies in South Australia that can dispose of waste on their own site.

CORE ENVIRONMENT RULES



Our Core Environment Rule for WASTE MANAGEMENT

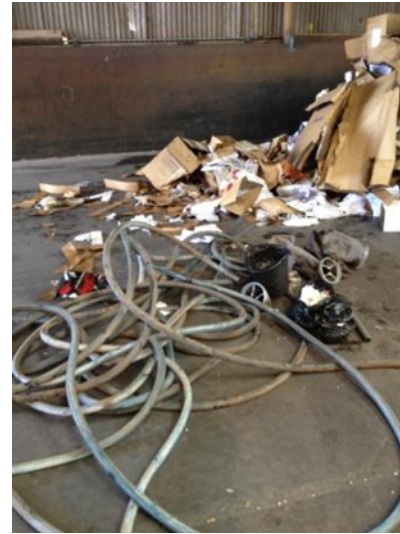
➤ Waste must be disposed according to the approved waste management practices in WI 50_403

- Don't bring waste materials onto LPS/SIMEC Mining sites from external sources. ie. household rubbish
- Segregate wastes by material type ie. metal, wood, oil, grease, cardboard, general waste
- Store or dispose of waste types in defined areas as per signage or WI 50_403
- If in doubt, consult WI 50_403, your Supervisor, Contractor Controller or Site Services (4448)



Recycle
wherever
possible

WHAT NOT TO DO



General waste in cardboard recycling bins



Hard fill dump contamination



Spillage on roads



Household waste disposed of onsite



HOUSEKEEPING

We must not have disorganised dumping areas like this.

Waste must be segregated, contained and removed for disposal

Old cloth and packaging should be disposed of correctly



Scrap steel should be moved to metal recycling

Cables left discarded on ground – also a safety issue

Good housekeeping is both an environmental & a safety requirement. An untidy workplace can cause injuries & environmental issues therefore good housekeeping practices are essential for all workplaces. For example:

Spills should be cleaned up immediately	Suitable containers for waste should be conveniently located and regularly emptied
Work materials should be neatly stored	Work areas clean, uncluttered & free of waste
Walkways should be kept clear of obstructions	Waste products need to be banded and signed as waste materials

WHAT CAN BE RECYCLED?

Do not place any of these in the general waste bins



Cardboard / Paper



Grease



Batteries



Timber / Pallets / Crates



Waste Oil / Oily water



Fluorescent tubes / light globes



Printer cartridges



E-waste



Scrap Steel



Whitegoods



Copper / Electrical cables



Bottles & Cans



Empty oil & grease drums



Hard hats



Conveyor belt

WHAT ARE YOUR INDIVIDUAL RESPONSIBILITIES?



- Ensure that you put waste in the correct bin.
- Only put Whyalla Steelworks / SIMEC waste in our bins – No waste from home is allowed.
- Recycle where possible - Recycling must be part of our daily work routines – it is our responsibility to make it happen.
- Good waste management is as easy as putting recyclables into a different bin...that's no effort at all!
- Don't cross contaminate – if it can't be recycled do not put it in the recycling bin!
- Make sure that waste pallets are free of packaging and scrap metal – only the timber can be recycled.
- Follow housekeeping rules in your area

YOUR RESPONSIBILITIES



Don't walk past non-compliant waste management

SET THE EXAMPLE

MAKE IT HAPPEN

For yourself, your work environment, your community, your world.

For any waste enquiries please contact:

- ❖ Site Services on 4448
- ❖ Environment Department 4450